



PIKES PEEK

Pikes Peak Chapter of IFMA

November 2007
Volume 4 Issue 11

IN THIS ISSUE

President's Message	2
Professional Development	3
Membership News	4
Programs	5
Sponsorship	6
WWP 2007	7

Speakers, Happenings and Events

Monthly Meeting:

November 14th, 2007
 Time: 11:30 am – 1:30 pm
 Location: World Arena
 3185 Venetucci Blvd
 Colorado Springs, CO 80906

Please send reservations to:
rsvp@ifma-pikespeak.org

Sponsored By:



Board Meetings

The Board meets the 1st Friday of every month
Time: Breakfast 6:45 a.m.; Meeting 7:00 a.m. to 9:00 a.m.
 (All members are welcome to attend)
Location: Oracle Corporation



Next i-Session:

Introduction to Sustainability
 November 13, 2007 / 1:00 PM CDT

www.ifma-pikespeak.org

Pikes Peek is a monthly
 publication of the Pike's
 Peak Chapter of IFMA

Mission Statement:

To advance the professional growth of our members and develop the profession.



President's Message

Dear Chapter Members,

You may be familiar with Six Sigma, a re-engineering process designed to achieve perfection, or a level of defect below 3.4 defects per million. Six Sigma is a systematic approach to solving problems and increasing efficiencies to an existing process through the use of data.

Initially designed to reduce defects in manufacturing, Six Sigma is also used to improve the process and quality of services. From a customer service perspective, satisfied customers expect consistent and predictable service all the time.

Six Sigma methodologies, such as process mapping, can be used to define, measure and analyze a process. A visual representation of each step or action within a process can help reveal where breakdowns occur and which areas have the greatest potential for improvement.

Several years ago I earned a Green Belt in Six Sigma. Training was intense and interactive. Real life scenarios kept everyone actively engaged and made the training extremely valuable.

If you have an opportunity to learn about or participate in Six Sigma program, I highly encourage it. If you have experience with Six Sigma, I'm interested in learning if you've incorporated any principles in your role as an FM.

To learn more about Six Sigma, there are numerous resources on the intranet. Here's one to get you started:

http://www.isixsigma.com/me/six_sigma/.

Sincerely,
Rachelle

Professional Development

FMP Class

Date: 12/12/2007
 Leadership & Management Competency Course
 2 Day Class
 December 12 & 13, 2007

Spend 2 days with the Denver Chapter of IFMA this December and make progress towards achieving your FMP credential! Gain an in-depth understanding of operations and management and complete two of the required course areas for the Facility Management Professional (FMP) designation.

If you are a candidate for the Certified Facility Manager (CFM) credential, here's your opportunity to brush up on these two core competencies. The Leadership & Management Competency Course satisfies Area 4 for the FMP, while also earning 1.5 CEUs. To see a detailed description of this class, go to www.ifma.org.

IFMA Denver Chapter Members \$400 (US)
 IFMA Members, all other, \$475 (US)
 Non IFMA Members \$550 (US)

Hotel Recommendations:
 Sheraton Denver Tech - 2 miles from class
 7007 S Clinton St. Englewood, CO 80112
 303-799-6200, Cost \$169.00

Wingate Inn & Suites - 2 blocks from class
 8000 East Peakview, Greenwood Village, CO 80111
 303-221-0383, Cost \$109 (must be under Rio Tinto)

Registration Deadline
 12/05/2007

Go to http://www.ifmadenver.org/2_events.cfm?event_id=304 to register online.

The Pikes Peak Chapter of IFMA would like to start hosting i-Sessions as a benefit to the chapter membership. The Chapter would pay for the session and make it available at a host location for any member to participate. Please go online and take our short survey to determine interest and subject matter for consideration. You can take the survey at www.ifma-pikespeak.org/survey.html.



IFMA i-Sessions

Introduction to Sustainability
 Nov 13, 2007 / 1:00 PM CST /
 60 Minutes

Keys to Successful Enterprise-
 Wide Workplace
 Management
 Nov 14, 2007 / 11:00 AM CST
 / 90 Minutes

Avian Flu and Pandemics:
 Practical Guidance for the
 Facilities Management
 Professional
 Nov 15, 2007 / 12:00 PM CST/
 120 Minutes

Why Green Roofing?
 Nov 20, 2007 / 12:00 PM CST
 / 90 minutes

Introduction to Sustainability
 Nov 28, 2007 / 1:00 PM CST /
 60 Minutes



Membership

Welcome to the Pikes Peak Chapter of IFMA!

We would like to welcome the following new members:

Russell L. Romero

Sales/Marketing
Aspen Diversified Industries
220 Ruskin Dr
Colorado Springs, CO 80910
russellr@ppbhg.org

Special Thanks!!!

To those Professionals and Associates who have renewed their memberships!!!

Jodi Bounds – Verizon
Jon Bucher – Focus on the Family
Jim Caves – Verizon
Daniel Christianson – Heart of the Rockies Medical Center
Jim Hardin – Aeroflex
Roger Lage, CFM, FMA, RPA – USAA
Roger Thompson – Focus on the Family
Bart Weinberger – Wells Fargo & Company

November 2007 Anniversaries

1 Year

Jodi Bounds – Verizon
Jim Edwards – Verizon
James McDonald - Progressive Insurance
A Better View – Michael Burnell
Haynes Mechanical Systems – Paul Angotti
The Wackenhut Corporation – Kara Plender

2 Years

Jim Caves – Verizon

3 Years

Clint Christianson – Verizon
Daniel Christianson – Heart of the Rockies Medical Center

5 Years

FBG Services Corporation - Roy Van Esselstine
GBM – Steven McKinney

7 Years

Roger Thompson – Focus on the Family

11 Years

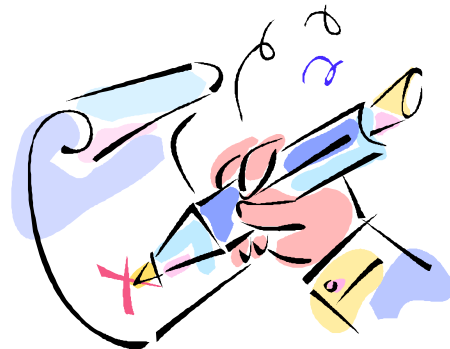
Bart Weinberger – Wells Fargo & Company

16 Years

Roger Lage, CFM, FMA, RPA - USAA

17 Years

Karen Jones, CFM



Don't Forget!!!!

New Professional members receive (5) \$20.00 IFMA Bucks certificates...to be used at any local Pikes Peak Chapter event of their choice!!!

Current Professional members who sponsor a "New Professional" into the Pikes Peak Chapter...Will themselves receive (2) - \$20.00 IFMA Bucks Certificates!!!

Programs

November Meeting

Date: Wednesday, November 14, 2007

Time: 11:30 AM – 1:00 PM

Location: World Arena
3185 Venetucci Blvd
Colorado Springs, CO 80906

Reservation Deadline: Wednesday November 7th, rsvp@ifma-pikespeak.org

When leaving an RSVP for a Guest,
Please include your Guest's name.....
You will receive an e-mail confirmation back
after you have RSVP'd.

At This Month's Meeting

November 14th
Luncheon and Tour at World Arena

We will not be able to accept walk-ins
for this event. You must RSVP by
November 7th to attend.



Upcoming Events

December 19th – Monthly Meeting

Meet and Greet

January 16th – Monthly Meeting

Ryan McClure
Guaranteed Recycling Xperts

How to Recycle and Properly Handle
Disposing of Electronic Waste (e-waste)

LEED Study Group Sponsored by Bonitz Flooring Group, Inc.

The next meetings for the LEED Study Group will be at 5:30 PM
on WED 11/28. Contact Denise Jacoby at 719-593-2220 for
details.

Sponsorship

**Commercial and Residential
Coatings and Coverings Specialists**
Serving El Paso County and surrounding areas for over 25
years



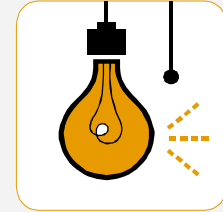
TECC Painting has a full-time team eager to provide the superior painting and coatings services our customers have come to expect. Our staff is equipped with the knowledge and talent to manage the needs of both residential and commercial clients.

For our facility managers, TECC Painting can keep your business looking fresh year-round with our 24-hour facilities maintenance program. We provide quick, professional service and cost-effective pricing to stay within your budget requirements. Annual maintenance contracts are available depending on your needs. Call us for a free consultation and estimate on our TeccXpress Maintenance Program.

Our Commitment To You

- To provide quality craftsmanship
- To use high quality materials
- To provide written estimates
- To protect personal property
- To maintain a professional and positive attitude
- To provide excellence in all that we do.

Please contact us for all of your painting needs...
(719)577-9300 -- (719)577-4222 (fax) -- info@teccpainting.com



If you are interested in sponsoring a monthly luncheon or an upcoming Chapter event, please contact Randy Zornes at 719-471-3851 or email RZornes@fbgservices.com

World Workplace 2007

It was our (Heather Kelley, Roy Van Esselstine, Denise Jacoby and Pam Cornella) great pleasure to attend the 2007 World Workplace as representatives for the Pikes Peak Chapter. We would like to thank the Chapter for the opportunity to attend this great event; unfortunately we did not bring back any awards.

According to IFMA, World Workplace 2007 Conference & Expo attracted approximately 5,000 attendees from more than 40 countries (I think Denise met the whole delegation from Nigeria) and generated about \$6.5 million in revenue for the city of New Orleans. It was evident from the limited view we had of the city that New Orleans is clearly on it's way back, but has many hurdles still to overcome. The central business district, French Quarter and other tourist areas are thriving, but talking with other attendees who took city tours, there is still much devastation in areas hit hard by Katrina.

The Expo hall featured the latest and greatest in products and services for today's Facility Manager with an emphasis on being "Green". As we wandered the Expo hall of 317 exhibitors, we saw national representation of some of our local associate members such as FBG Service Corp., Johnson Controls, Inc., Bentley Prince Street, Brickman, Brock and Co., and MilliCare Textile and Carpet Care.

Conference attendees had the opportunity to participate in as many as 78 different educational sessions relevant to the performance and safety of the built environment. Sessions followed educational tracks such as Sustainability, Trends & Innovations and this year's new track, International Perspectives. We were not able to attend all of these courses but did sit in on some great sessions. We do have information on all the seminars provided; a list of topics will be posted on the web site soon.

The event was wonderful; we strengthened our relationships with the Denver Chapter and met many wonderful people from across the country. It is a worthwhile event for anyone to attend, as professional or associate member and shows the strength of our association. Next year's event will be in Dallas, TX October 15-17, 2008, make your plans now!



Congratulations to the following Chapters.

Award of Excellence Winners!

Membership Marketing:

Small Chapter: Greater Orlando Chapter of IFMA

Large Chapter: Atlanta Chapter of IFMA

Newsletter Publishing:

Small Chapter: West Michigan Chapter of IFMA

Large Chapter: Atlanta Chapter of IFMA

Web Communication:

Small Chapter: San Francisco Chapter of IFMA

Large Chapter: Denver Chapter of IFMA

Chapter of the Year:

Small Chapter: West Michigan Chapter of IFMA

Large Chapter: (tie)
Boston Chapter of IFMA &
Philadelphia Chapter of IFMA

FM – Information You Should Know

Commercial Carpets and Sustainability

As a follow up to last month's program Ryan Davis has provided this summary of what a Facility Manager should know when talking about commercial carpet sustainability.

What should a facility manager consider when trying to evaluate manufacturers and their products regarding sustainability?

- What is the manufacturer's commitment and environmental vision? Do they have it in writing, not just words from a salesperson?
- Who walks the walk, or not just talk the talk. Ask direct, candid questions. Do they recycle and HOW? What is the end product after carpet is recycled?
- Understand the terminology to avoid being "greenwashed".
- Gather as much independent information about carpet sustainability before you even begin the individual evaluation.

Terms worth understanding:

- CRI Green Label Plus Program: This is a testing program introduced by the Carpet and Rug Institute to ensure end users a product has passed emissions testing on a set of required chemical components.
- Sustainable: Generally refers to a product which can be continually dematerialized and reused again and again, returning a product to the material stream in its original form.
- Recycle means to produce a new item from an old item or to reuse parts. Types of recycling can be "downcycling", "cradle to cradle" recycling and "waste to energy".
- Downcycling provides another "life cycle" for a product by reclaiming and turning it into another product, slowing the waste cycle, but not eliminating it. Downcycled products will eventually be sent to the landfill.
- "Waste to energy" is production of energy through combustion of solid waste. Using reclaimed carpet as a combustion component in lieu of fossil fuel.
- LEED Certified carpets: There is no such animal! Carpet products can be "CRI Green Label" certified which awards a LEED point for the "low emitting materials" category.
- Recycled Content: A term defining the portion of a product that is composed partly of materials that have been recovered from waste or materials that consumers have used and recycled. Beware of using this term as a major criteria for determining the "sustainability" of a product!

Ryan M Davis
Shaw Contract Carpet
Office- (719)528-1140
Fax- (719)528-1960

The Lighter Side



Volunteer Needed!!!!

The Pikes Peak Chapter of IFMA is in need of a new Social Chair. The goal of the COFAX/ Social Committee is to provide unique networking and social opportunities for Chapter members. Special events include the annual Holiday Social, Joint BOMA/IREM/ IFMA Golf Outing and COFAX Awards Banquet.

Anyone interested in volunteering or know someone for this role, please contact:
 Rachelle Otis at Rachelle_Otis@troweprice.com or 719.278.6367
 Steve Wertenberger at swertenberger@us.ci.org or 719.487.6451

